

# Tracker

*Tracking our Past and Present for the Future*

Volume 6, Number 1

Winter 2007

## **Board Members**

*Helen C. Barnett*

*Laurie Baird*

*Stanley Brown*

*Carol B. Cole*

*Carol C. Cole*

*W. Mike Ferguson*

*Susan Abernethy Frank*

*Elizabeth A. Holloway*

*William L. Holloway*

*Sandy Koehler*

*Deborah C. Long*

*Deborah Gammons Pendl*

*John Rockaway*

*Frances Stafford*

## **Editor**

*Pat MacMillan*

## **Legal Counsel**

*Ken Bassett*

## **Dates to Remember**

**February 25, 2007**

**3:30 P.M.**

**St. Thomas Episcopal Church  
An Afternoon with  
Reverend Philip Gatch**

**April 29, 2007**

**3:30 PM**

**The Little Miami Scenic River:  
A Natural Wonder  
Worth Preserving**

**Presented by Eric Partee  
St. Thomas Episcopal Church**

## **Did You Know?**

### **Covalt Station**

**C**ovalt Station was the first settlement in what is now known as Terrace Park. Abraham Covalt with his party of forty-five men women and children came from Pennsylvania to Columbia and then up the Little Miami River to a place near the river and Mill Creek, somewhat below where St. Thomas Church stands today. Covalt Station was a rather large rectangular fort with blockhouses at the four corners, seventeen cabins against the inner walls and just one entrance. Similar or smaller stations were built all around the Cincinnati area to serve as still needed protection from Indian attacks. There is a discrepancy concerning the date of Covalt Station's founding. Many say 1789 but it may have been 1790. Timothy Covalt, a son of Abraham, gave a deposition when he was 71 years old. It states, "About the year seventeen hundred and ninety", he said, "Abraham Covault emigrated with his family to the Northwestern territory and settled at a place on the Little Miami afterward called Covault's Station."

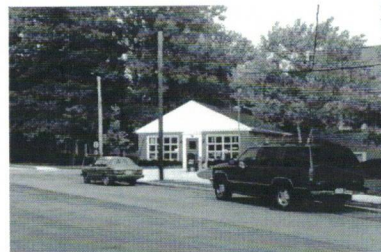
### **Post Office**

**T**he very first post office on land that is now in Terrace Park was established circa 1804. It seems to have had three different names: Charleston, Round Bottom and Round Bottom Mills. Edward Whistler was the first Postmaster followed by Jacob Broadwell, Thomas Reagans and by 1810 John Smith. This post office was probably down in the area where John Smith lived, the Round Bottom area, and was discontinued between 1813 and 1817.

The next post office was established on June 26, 1879 with Emily C. Hendrick as Postmaster. By February 16, 1880 Robert Lem(m)on was Postmaster. This post office was discontinued on March 3, 1890 and reestablished on June 23, 1891 with Harriet M. Gegner as Postmaster. All this was, of course, before Terrace Park was incorporated in 1893. Next came Lucius W. Conkling (appointed 8/16/1903), Miss Lillian L. Conkling (10/20/1920), Lulu Tarvin (10/12/1921) and then Lillian Droescher in 1925.

The building (411 Terrace Place) where Harriet Gegner ran the post office was built on Lot #112 of J. W. Sibley's subdivision and was sold to Mrs. Gegner in 1891. She evidently sold books and perhaps other small items besides serving as Postmaster and railroad agent. By 1903 the post office moved to the Conkling's Grocery Store (415 Terrace Place), then briefly to a building across Harvard on what is now the Village Green and then back to 411 Terrace Place where Lulu Tarvin and her two sons and then Mrs. Droescher ran a store as well as the post office. She took the job after her husband's death in 1921 and held it for 25 years.

It was Effie Miller who in 1953 had Walter Gingrich build today's post office (409 Terrace Place) to the Post Office Department's specifications. Door-to-door mail delivery began on March 13, 1960. Before that everyone had to go to the post office to pick up the mail.





# AN AFTERNOON WITH REVEREND GATCH: PIONEER, PREACHER AND PUBLIC SERVANT



PHILIP GATCH

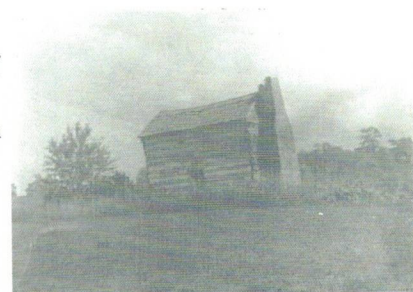
Jim Williams, educator, naturalist, storyteller and descendent of Philip Gatch, will present *An Afternoon with Reverend Gatch: Pioneer, Preacher and Public Servant* on February 25.

Philip Gatch, born in 1751 in Baltimore County, Maryland, grew up on the farm of his parents, Conduce and Pressusocia (Presocia) Gatch. Phil attended the Episcopal Church and was educated in the first school established in the area. He was an avid reader, especially on pious men and the history of the times. As a teenager entering adulthood, he wrestled with the salvation of his soul. Falling under the spell of the Methodist Circuit Riders sent to the Colonies by John Wesley, he was soon converted to the new religion.

Philip Gatch became one of the first American-born Methodist Circuit Riders in the Colonies. During the Revolutionary War, fearing for their safety, Wesley recalled most of his foreign-born preachers, which meant Gatch and the other American-born preachers were left to continue

spreading the gospel throughout the wilderness. The rigors of preaching in the wilderness over the years began to take a toll on Reverend Gatch's health. This along with the responsibilities of his marriage to Elizabeth Smith would place a burden on his ability to serve the Methodist Church as a Circuit Rider. So after many years of spreading the gospel, Gatch retired to his farm in Virginia to raise his family. During this period, Gatch would still serve as a local preacher as his health allowed.

In 1799 Gatch made the decision to relocate his family to the Northwest Territory in the Ohio country. Since he could not tolerate slavery and it was outlawed in the Ohio country, it was an easy decision to make the long treacherous journey to the Promised Land. He settled along the banks of the Little Miami River in what was to become Clermont County. Gatch lived out his life bringing Methodism to the area as well as serving as a judge and as a representative on the Ohio Constitution Committee, which helped to add Ohio as a state in 1803.



GATCH CABIN

## SAVE THIS DATE...

**Sunday, February 25**

**3:30 PM Social/Refreshments**

**4:00 PM Program**

**St. Thomas Episcopal Church**

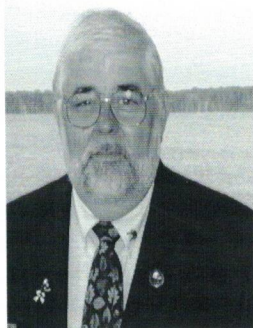
**Parish Hall**

*Enter the Church, 100 Miami Avenue, by the Parish Hall door at the top of the steps or the "up handicap" ramp*

**An Afternoon with Reverend Philip Gatch:  
Pioneer, Preacher, and Public Servant**

*Featured Speaker*

*Jim Williams*



Jim Williams



Jim Williams portraying the Reverend Philip Gatch

## MIAMI GROVE NATURE PRESERVE

Check out the beautiful "monument"

The bronze plaque, mounted on a very dramatic rock, is ready for your viewing. Head down to the Miami Grove Nature Preserve and check it out. Landscaping, using native materials, will be donated by the Terrace Park Garden Club.

In October 2005, the following proclamation was made by Mayor Jay Gohman at a ceremony to dedicate and rename the Nature Preserve:

"To recognize the people who once called Miami Grove home and also those who were seasonal visitors, the Terrace Park Village Council passed an ordinance renaming the site the Miami Grove Nature Preserve."

The new designation serves as a reminder of the former Miami Grove community and as a commitment to continue to preserve the natural setting of the area.

The Miami Grove Nature Preserve is truly a treasure of our village. Those who lived along this river bank years ago often reflect on the beauty of and their love for the area.

Today, residents and former residents can enjoy this peaceful natural setting, an area where time and pressure fade. Special thanks to Councilman Jeff Koreman for his inspiration and work on the plaque/rock and to the Village maintenance men, Dave, Tim, Paul and Dave, who installed the "monument" and added the fall flowers. The dedication to the Village of all these men is very special.



## Artist's Corner

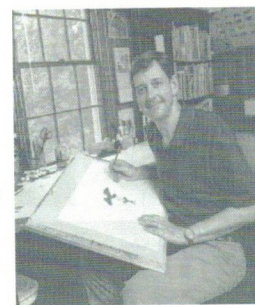
### Will Hillenbrand

By Carol C. Cole from the TPHS Archives

The Will Hillenbrand family moved to 808 Lexington Avenue in 1990. Will grew up in College Hill, the youngest of four boys, where he always enjoyed drawing and often drew on the basement walls as well as on paper. He also loved to have people tell him stories as well as read to him. Very special relationships developed with the storytellers. He received his BFA from the Cincinnati Art Academy in 1982. During college he worked at a local television station producing commercial artwork. After graduation, Will was art director for a local advertising agency. In 1986 he attended an intensive 3-week seminar on writing and illustrating children's books at Ohio State University. There he wrote and illustrated his first book, which he did not deem a success, but from that experience he knew that illustrating children's books was what he wanted to do.

Today Will Hillenbrand spends a lot of time in schoolrooms and libraries where he explains the importance of the creative process in writing and illustrating books for children. The process starts with an idea. He keeps a journal and makes sketches before he decides which ones to develop. Models are often based on Terrace Park people, children, animals and trees. Sometimes he uses the computer for experimenting but always paints his work by hand, usually with oil and oil pastels. He aims to challenge the child's imagination and doesn't talk down to them. He wants to create a kind of drama on the page so that one page leads inevitably to the next and the reader will be anxious to turn the page. It's a long and involved process, but obviously a successful one, since he's won numerous awards for his many books. Will is responsible not only for the actual illustrations but also for the book design and page layout "so text and pictures flow together and build suspense towards the climax".

For more information on Will Hillenbrand and his creative process look at his website ([www.willhillenbrand.com](http://www.willhillenbrand.com)) or pay him a visit.



## TPHS CURRENTLY BOASTS 24 LIFETIME MEMBERSHIPS

Polly and Ken Bassett

Helen Christopher Barnett

Bruce D. and Eliza E. Brown

Carol C. and Leland M. Cole

William and Mary Drackett

Susan Abernethy Frank and John J. Frank, Jr.

Eleanor S. Gallagher (In memory of W. Graydon Gallagher)

Mr. and Mrs. James E. Gilchrist

Robert A. Haines Sr. and Dorothy B. Haines

Edna Heil Hay (In memory of Phil "Bud" Heil)

Leslie C. Jones

Coleen M. Lowe and G. Franklin Lowe, M.D.

Elizabeth A. Martin

Lynne and Dick Mileham

Ray and Patti Normile

Julie B. Northrop (In memory of Ted Northrop)

Mark E. and Beth L. Porst

John and Linda Rockaway

Stoddard and Rebecca Rowe

Barbara G. Self

Nick and Rosell Shundich

Jack and Barbara Smith

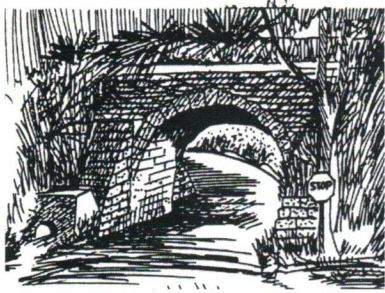
Frances and Roger Stafford

William R. and Susan Weakley

## Membership Drive Update

By this time, everyone should have received their 2007 Membership Renewal Letter. Thanks to a major increase in all levels of membership, we can continue to preserve our past and foster an appreciation in our community for the wonderful qualities we have. All members receive the quarterly newsletter **TRACKER**, priority announcement of special events and an invitation to our Holiday Party. This issue of **TRACKER** has been sent to all members; however, all future issues will only be sent to those who have renewed their 2007 membership. The membership levels are: \$15, Individual; \$25 Family; \$50, Heritage (can be for an individual or family and includes special recognition in the **TRACKER**), \$100, Corporate/Patron (includes special recognition and complimentary ad in the **TRACKER**); \$1000, Lifetime (can be paid over a 3 year period. The transfer of stocks can take place as a donation to the Historical Society. Lifetime Members' names are engraved on the plaque the TPHS office and they receive a top quality copy of an exclusive Terrace Park historic scene painting by local artist Rosell Shundich). A donation can also be made in memory of a loved one or in honor of a birthday (as was recently done for Helen Barnett's 90th birthday). If you need a copy of the 2007 Renewal Form or are interested in becoming a Lifetime Member, contact the TPHS office at 248-1777 or [safrank@fuse.net](mailto:safrank@fuse.net)





PRSRT STD  
US Postage  
**PAID**  
Permit #271  
Milford, C

### *Terrace Park Historical Society*

P.O. Box 3  
Terrace Park, OH 45174  
513-248-1777  
[www.tphistoricalsociety.org](http://www.tphistoricalsociety.org)  
[www.tpsurvey.org](http://www.tpsurvey.org)

## *Tracking our Past and Present for the Future*

### **The Gatch Family in Terrace Park**

**L**ewis Newton and Mary Greeno Gatch were the first in the Gatch family to live in Terrace Park. At first they lived in the now long-gone frame and stucco house at 614 Wooster Pike. At least by the early 1900s they moved to 415 Elm Avenue with their two young sons: Loren Greeno and John Newton. At the time, Lewis was a struggling young lawyer so his parents may have helped them get that house. Real estate law was a specialty of Lewis and he helped clients like Sibley, Pattison & Iuen create subdivisions that are now part of Terrace Park.

Loren Greeno Gatch married Margaret Grayson, daughter of Frank (long time sport's writer for the Times Star) and Daisy Grayson (749 Park Avenue) and it was for them that 104 Miami Avenue was built. After their divorce, Loren married Minna Adams but he died within two years. Minna lived there alone for well over 40 years.



*415 Elm*



*625 & 635 Valley View*

Two of John Newton Gatch's children have lived in Terrace Park: Orpha Ann and Lewis Gerrans. Lewis with his wife Noralee Helen Thomas lived at 211 Amherst Avenue from 1966 to 1971 before moving to Indian Hill. Their son John Thomas remembers living there as a young boy next door to his Aunt Ann at 602 Miami Avenue. Ann, the family historian, now lives at 635 Valley View with John next door at 625 Valley View. Ann Gatch remembers going to kindergarten with Peggy Gatch behind the garage at 609 Miami and to Dr. Robertson for dentistry in the house she later owned (602 Miami). Peggy Gatch was the daughter of Conduce and Mabel Gatch, from another branch of the Gatch family, who lived at 504 Miami Avenue. John Thomas Gatch married Jeri Deckard and first lived in Terrace Park at 131 Wrenwood Lane.

There were other Gatch relatives living in Terrace Park. Georgiana Hebble at 717 Lexington Avenue was a daughter of Abby Gatch Livingston, sister of Lewis Newton Gatch. Myra Greeno Bass at 322 Harvard Avenue was a sister of Mary Greeno Gatch, Ann's grandmother. Various members of the Gatch family also owned land in several areas of Terrace Park. Lewis Newton Gatch once owned what is now Stanton Field and sold it to the Village of Terrace Park. Some think 218 Oxford Avenue may have been built for a Gatch.

Most members of the Gatch family in Terrace Park are descended from Nicholas and Mary Hiss Gatch, great grandparents of Lewis Newton Gatch. Nicholas was a brother of Philip Gatch. Conduce Gatch is a direct descendant of Philip Gatch.